

Department of Emergency Medicine
Office of the Vice-Chairman

Dear Colleagues:

I am excited to present the first annual report for the newly established separate Department of Emergency Medicine (ED) at the UMDNJ-RWJMS New Brunswick Campus. While this department academically reports to Dr. Michael Chansky at the UMDNJ-RWJMS Camden Campus, its clinical and administrative functions are located entirely at the New Brunswick Campus. Our physicians see patients exclusively at our affiliate partner, Robert Wood Johnson University Hospital. Prior to this date the department was covered by Emergency Medical Associates, a private physician group.

While our primary goal for this last year was to establish an academic department and hire staff for the department I am happy to report that in Fiscal Year 2006, the Emergency Department continued to see rising patient volumes. We continued an aggressive approach for the treatment of community acquired pneumonia and door- to- balloon time in Acute MI patients. The Emergency Department has also been actively involved in the Stroke Center Steering Committee, preparing the hospital for Stroke Center Certification. Our first year was very active and, having laid the foundation for the clinical activities, we look forward to solidifying our academic activities in the next year.

Robert Eisenstein, MD
Associate Professor of Emergency Medicine
Vice Chairman, Department of Emergency Medicine
UMDNJ/Robert Wood Johnson Medical School
Chief Division of Ambulatory Care Services
Robert Wood Johnson University Hospital

UMDNJ- Robert Wood Johnson Medical School FY06 Annual Report for Department of Emergency Medicine

Emergency Department Team

As a result of the restructuring of the emergency room provider coverage that occurred at UMDNJ- Robert Wood Johnson Medical School (RWJMS) and Robert Wood Johnson University Hospital (RWJUH), effective July 1, 2005, the physician and physician assistant staff is now part of the medical school faculty and the newly developed Academic Department of Emergency Medicine at the New Brunswick campus. We actively recruited board certified/eligible; residency trained Emergency Physicians with interest and experience in academic Emergency Medicine.

Since July 2005 we have hired ten physicians, ten physician assistants and have nineteen per diem physicians and four per diem physician assistants as patient providers for our department.

Our support staff consists of an Administrator, Administrative Coordinator II, Office Manager and thirteen Data Control Clerks.

As of July 2006 we will have six more physicians join our team. As we hire more permanent faculty we will decrease the use of per diem staff.

FACULTY

Vice-Chairman

Robert Eisenstein, MD – Associate Professor

Physicians:

Rajiv Arya, MD, Assistant Professor
Winifred Fong, MD, Assistant Professor
John Garrett, DO (Awaiting Appointment)
Mervin Griffin, MD, Assistant Professor
David Hong, MD, Assistant Professor
Cortlyn Jeter, MD, Assistant Professor
Nidhi Kansal, MD, Assistant Professor
Roger Martinez, MD, Assistant Professor
Mark Merlin, DO, Assistant Professor
Andrew O'Connor, MD, Assistant Professor
Amirt Ponnambalaum, MD, Assistant Professor
Renee Riggs, DO, Assistant Professor
Robert VanVolkenburgh, MD, Assistant Professor

Physician Assistants:

Kelly Baier, PA, Instructor
Kristen Batson, PA, Instructor
Dipali Bhatt, PA, Instructor
Maureen Gray, PA, Instructor
Robert Lamare, PA, Instructor
Tracey McGee, PA, Instructor
Kamini Patel, PA, Instructor
Setu Patel, PA, Instructor
Sina Patel, PA, Instructor
Greg Pierson, PA, Instructor

STAFF

Part Time Clinical Personnel

Physician Specialists

Rayshma Ali, DO
Augustine Alifo, MD
Patrick Davis, MD
Guillermo García, MD
Craig Gronczewski, MD
Randall Lewis, MD
Oscar Marcilla, MD
Dennis McGill, MD
Frances Mifsud, MD
Laura Snyder-Pawlukanis, MD
Hillel Peltz, DO
Kevin Roma, MD
Stuart Rasch, MD
Steve Ryave, MD
James Thomas, MD
Mark Utkewicz, MD
Kenneth Weinberg, MD

Physician Assistants

Rodolfo Alonso
Lori Bobula, PA
Ken Chan, PA
David Davidson, PA
Camille Dyer, PA

Administrative Staff

Antoinette Brooke, MPH - Administrator
Jennifer Curry- Office Manager
Joan Sherry – Administrative Coordinator II

Data Control Clerks II

Anthony Colaco	Mercy Ocasio
Damali Crawford	Jessica Padilla
Verena Kansog	Dawn Piarulli
Sumera Khan	Rose Borrero-Pimentel
Christopher Kilker	Tina Zammit
Brandon Miller	

Clinical Volumes

The final patient volume for FY06 is 59,713 adult visits, 15,385 admissions, and 26,182 procedures.

Total visits increased by approximately 4% over the previous year with an admission rate of 26%. The “Left Without Being Seen” rate is approximately 1% which is right at target and below the national benchmark for EDs of 3%.

Operations and Performance Improvement

The Patient Triage 15/30 program continues to be maintained using the department's three tiered system of non-urgent, urgent and emergent care. This program guarantees that a patient will be triaged by a nurse within 15 minutes and seen by the physician or physician assistant within 30 minutes.

We continue to maintain a high level of direct physician order entry. A multi-disciplinary team redesigned advanced triage protocols to help expedite patient evaluation.

The Department continues to perform well as measured by the Maryland Indicators: Patients who returned within 72 hours were 1.3% of all visits and only 1.1% of our patients left without being seen which is significantly below that national benchmark of 3%. The average time in the ED was less than 2 hours for 24.5% of our patients. Seventy seven percent of our patients were discharged in less than six hours. Approximately 20% of our patients requiring admission were admitted within four to six hours of their arrival in the ED.

The "Code MI" team meets biweekly to review all acute MIs looking for opportunities to reduce door to balloon time. We acquired a life net receiving station in the Emergency Department to allow medics to directly transmit EKGs to the ED attending. This enables us to activate the cardiac catheterization lab and notify the interventional cardiology attending of the impending arrival of an acute MI patient. The Emergency Department has set a goal for "door to catheterization lab" within 45 minutes, in addition to the goals for administration of ASA and or beta blockers within prescribed timeframes. In FY06 we achieved significant compliance with these goals.

Code Pneumonia continues to promote improved compliance with antibiotic and blood cultures in patients with community acquired pneumonia. Charts are reviewed on a daily basis. Our goal is to have 100% compliance with antibiotics started and blood cultures drawn within prescribed timeframes. For the FY06 period we had 97% compliance in each of these areas.

The Brain Attack policy went into effect in November, with the goal of improving care for patients with acute CVA. RWJUH received certification from JCAHO in December 2005 as a Primary Stroke Center. We have achieved high levels of compliance with the clinical protocols related to acute CVA.

With impending changes in the RWJUH IS system, the ED has acquired multiple new "roving" computers. RWJUH registration clerks are using them for real time bedside registration resulting in increased patient satisfaction.

The department and RWJUH risk management office reviewed and started to implement various improvements in the security of the Emergency Department to better protect our patients and staff.

Emergency Preparedness/Emergency Medical Services

In May we hired Mark Merlin, DO to be the Medical Director of Emergency Medical Services for RWJUH. The ED Special Operations Team presented its second annual conference in 2006. We also started our EMS/Disaster Medicine Training Program which we anticipated will be approved for fellowship status in FY07. Our first participant, Dr. Robert Levy started on July 1, 2006. Plans are underway to implement a statewide Physician Response Vehicle program where we would be able to respond to mass casualty or other disaster situations with a physician at the site in a specially equipped vehicle.

We fully participated in the Avian Flu Pandemic Mock exercise in May 2006.

Graduate and Undergraduate Education

The Department faculty members have been actively involved in medical student and physician assistant student rotations and have supervised residents from the Departments of Medicine, Family Medicine and Psychiatry. In FY06 we mentored over twenty four students and approximately fifty residents.

OUTREACH/EXTRA-DEPARTMENTAL ACTIVITIES

UMDNJ-Robert Wood Johnson Medical School

Robert Eisenstein, MD

UMG Board of Governors
UMG Managed Care Committee
UMG Clinical Care Committee
RWJMS Graduate Medical Education Committee

Robert Wood Johnson University Hospital

Robert Eisenstein, MD

Service Chief Ambulatory Care
Division Chief Emergency Medicine
Brain Attack
Code MI Committee
Emergency Preparedness Committee
Throughput Committee
Medical Board/Credentials Committee
Outcomes Steering Committee

Rajiv Arya, MD

Assistant Medical Director
Performance Improvement Committee
Radiation Safety
Throughput Committee

John Garrett, MD

Emergency Preparedness Committee
Pharmacy and Therapeutics

David Hong, MD

Infectious Disease Committee

Tracey McGee, PA

Domestic Violence Committee

Mark Merlin, DO

EMS Medical Director

Code MI Committee
Emergency Preparedness Committee
Specialty Care Transport Unit
Special Operations Team
Stroke Committee
Chair MICU Advisory Council New Jersey Department Health and Human Services
Paramedic Program Medical Director Union County College New Jersey Regional
Paramedic Program

Renee Riggs, DO

Critical Care Committee

Robert VanVolkenburgh, MD

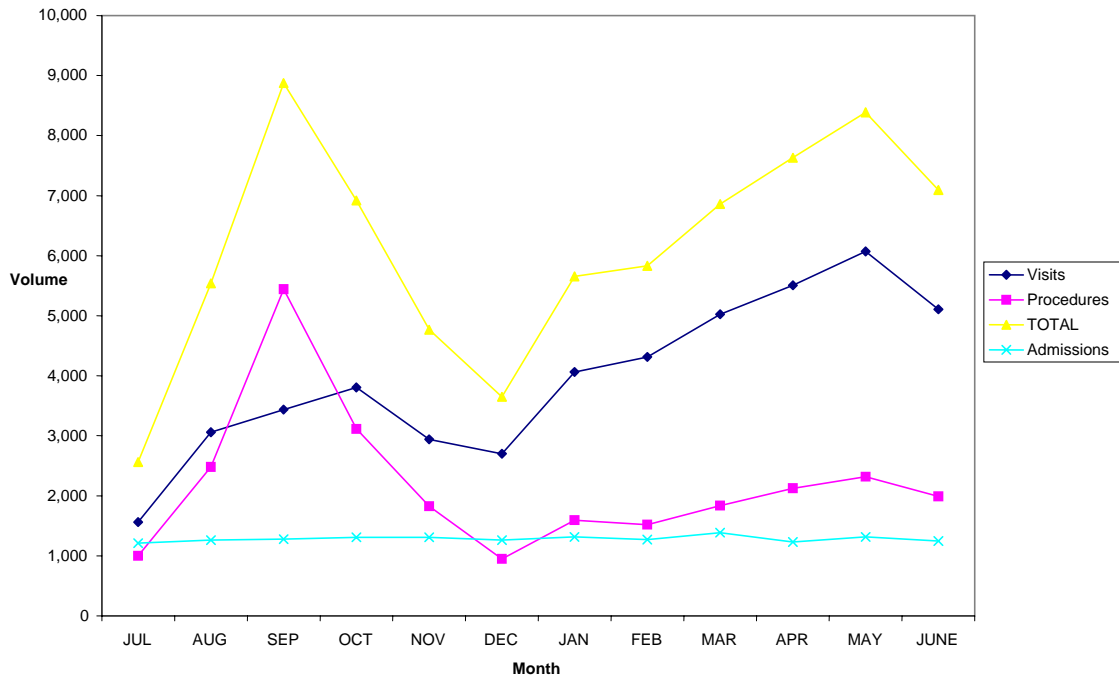
Trauma Committee

FUTURE DIRECTION

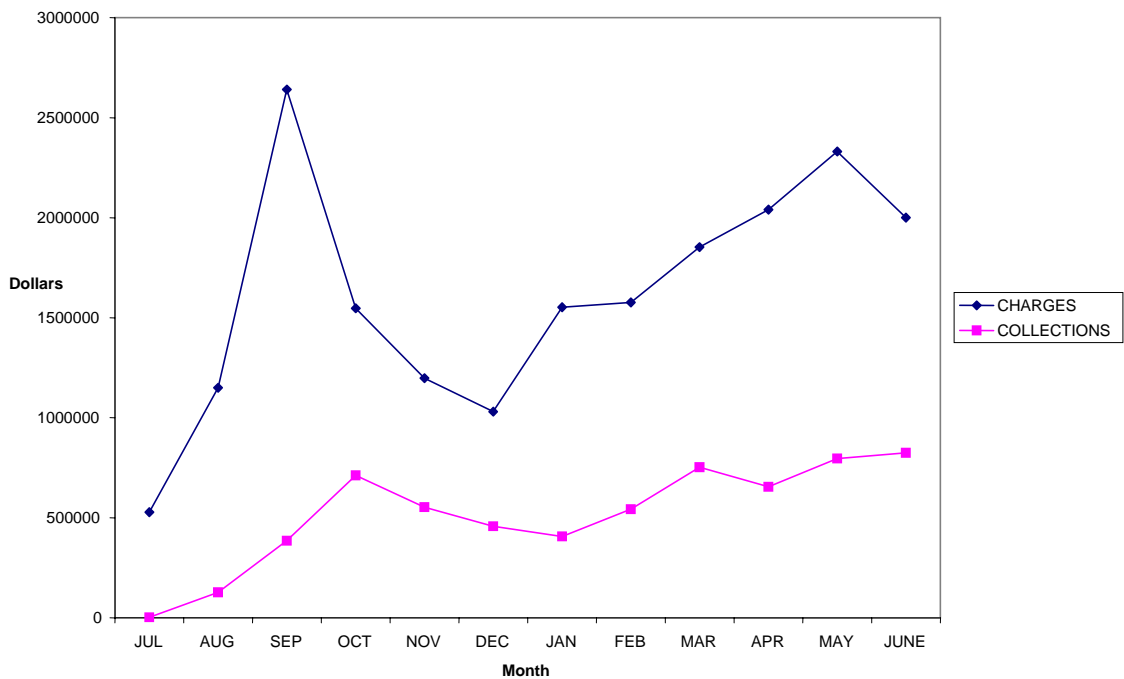
Just as FY06 saw the beginnings of our department, we look forward to the next fiscal year where we plan to grow and develop the department. Some of our key strategic initiatives include:

- Implement MD 1 Response Vehicle jointly with RWJUH-EMS
- Implement Chest Pain Observation Center
- Develop an ED based Ultrasound program
- Implement EMS/Disaster Medicine Fellowship Program
- Plan for Fourth Year Student Mandatory Rotation (7/1/07 start)
- Work with UMDNJ-SHRP to transfer Paramedic Certificate Program from a County College
- Submit ED residency program proposal to RRC
- Hire Director of Research & Faculty Development
- Complete recruitment of clinical faculty
- Continue to improve our patient satisfaction scores
- Continue to develop our ED team
- Improve clinical productivity and patient throughput time
- Expand our research portfolio

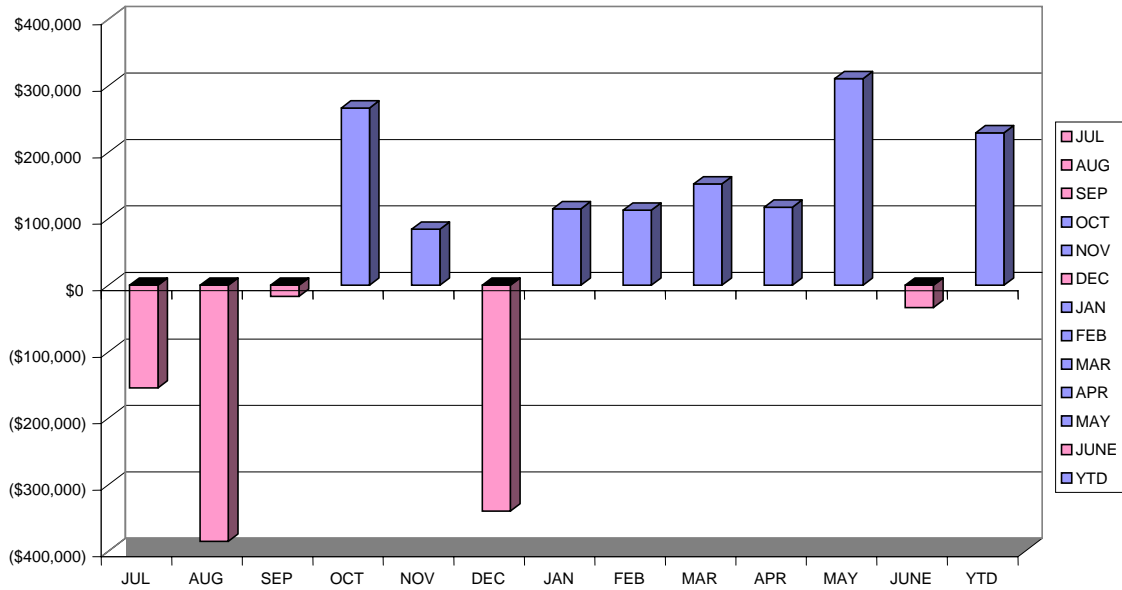
UMDNJ-RWJMS EMERGENCY DEPARTMENT FY06 VOLUMES



UMDNJ-RWJMS EMERGENCY DEPARTMENT FY06 CASH FLOW



Actual Profit/Loss Department of Emergency Medicine FY06



Department of Emergency Medicine Payor Mix FY06

