

Physician's Assistant Course

-2006-

Department of Pathology and Laboratory Medicine
UMDNJ – Robert Wood Johnson Medical School

Cast of Characters



Dr. Trelstad and Friend



Nancy Mundie and Friend



Dr. Martin

Pathology Chairman *Emeritus*
Former Director of CHINJ

Heart of the Program

Program Director

Core Missions of the Department of Pathology and Laboratory Medicine

- **Clinical Service**
- **Research**
- **Teaching**

CLINICAL SERVICE

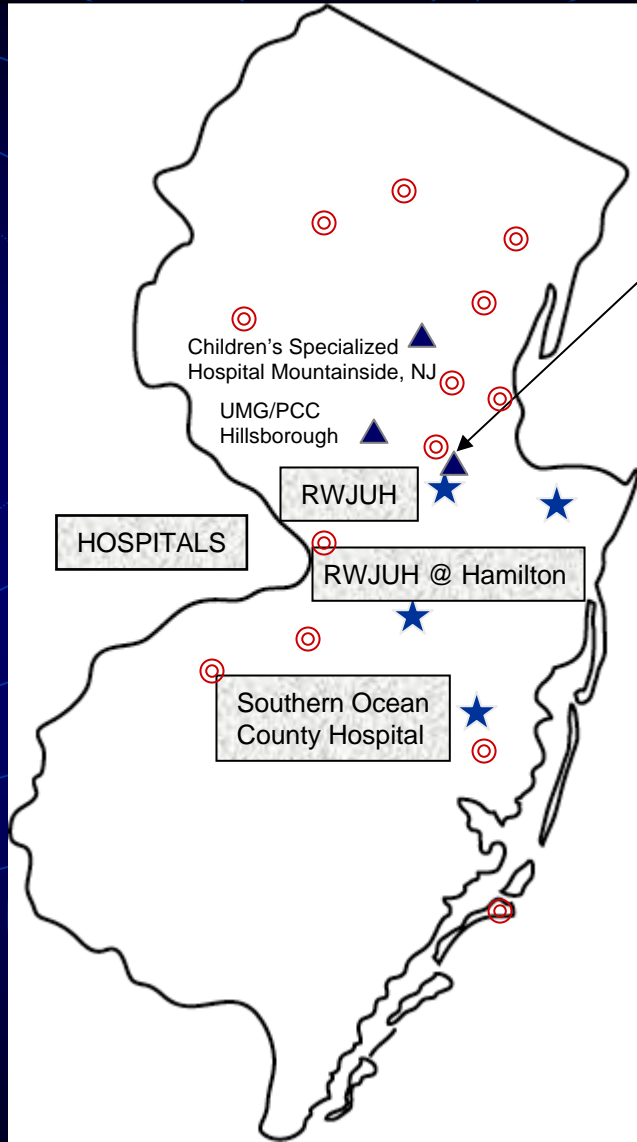
AP/CP SERVICES

- Robert Wood Johnson University Hospital
- Robert Wood Johnson at Hamilton
- Southern Ocean County Hospital
- Bayshore Medical Center

CLINICAL PATHOLOGY SERVICES (ONLY)

- Mountainside Children's Hospital
- University Medical Group – Multiple sites
- HIV Laboratory Support – Statewide
- <http://www2.umdnj.edu/udlweb/>

RWJMS Department of Pathology Sites



POCT SITES

Clinical Academic Building
 Clinical Research Center
 Cancer Institute of NJ (CINJ)
 HIV clinic (NJ DOH grant)
 Medical Education Building
 1 RWJ Place, New Brunswick

FMMS @ Monument Square
 317 George St., New Brunswick

Reproductive Endocrinology
 303 George St., New Brunswick

Chandler Health Center
 277 George St., New Brunswick

Bayshore Medical Center

NJ DOH AIDS RAPID TESTING GRANT -

- Atlantic City Health Dept
- Camden City Health Dept
- Henry J. Austin Hlth. Dept.
- E. Orange Health Dept.
- Morristown Mem. Hosp.
- Ocean City Health Dept.
- Bergen County Health Dept.
- Hyacinth Foundation
- Trinitas Hospital
- Hunterdon County Health Dept.
- Burlington County Health Dept.
- Newark Community Health Center
- Plainfield Community Health Center
- Raritan Bay Medical Center
- NJCRI.

RESEARCH

- Multiple Areas of Investigation
 - Carr
 - Foran
 - Wadsworth
 - Winklemann
 - Yurchenco & Li - Matrix Biology Laboratory
- Many sources of support
 - Federal
 - State
 - Foundation
- <http://www2.umdnj.edu/pathpweb/research1.htm>

Departmental Teaching Efforts

- Medical Student 2nd Year Course
- Physician's Assistant Program
- Integrated Case Course
- Resident Teaching
- Clinical Conferences

The background features three overlapping circles of varying sizes, each with a dashed line extending from its center towards the corners of the frame. The circles are light blue and overlap in the center, creating a complex geometric pattern.

PA 2006

Overview

Course Objectives

- Understand the relationship between structure and pathophysiologic function
- Anticipate the natural course of disease
- Interpret signs and symptoms elicited in a patient's history
- Interpret clinical laboratory data
- Understand the possible avenues of medical or surgical therapy

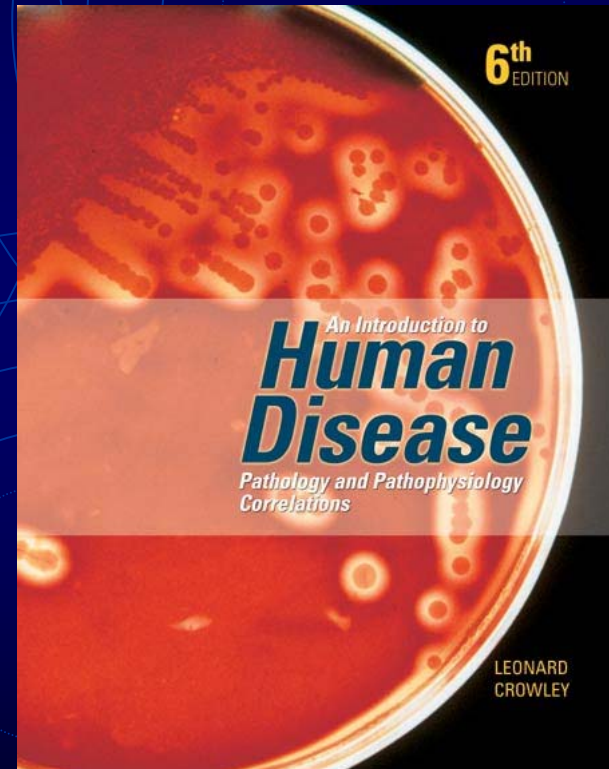
- *We do not focus on the histopathology of the disease, we do FOCUS on the pathophysiology of disease processes*

Introduction to Human Disease, Sixth Edition

Leonard V. Crowley, M.D., University of Minnesota

[View this title's Web site!](#)

- ***Introduction to Human Disease, Sixth Edition***
 - Specifically designed for students in the allied health field.
 - Correlates structure and functional disturbances
 - Indicates how pathologic processes cause various clinical manifestations.
 - Basic approach:
 - General concepts
 - Pathophysiologic systems



General Information

- Textbooks –
 - An Introduction to Human Disease, 6th edition, Leonard Crowley, Jones & Bartlett Publishers
 - Laboratory Medicine Casebook – Raskova et al. –
 - OUT OF PRINT
 - CD ROM is available for your use in Teaching Lab computers
 - Powerpoint versions of the cases:
http://www2.umdj.edu/pathpweb/case_based_studies.htm
- Support Materials:
 - Web Based Quiz:
http://www2.umdj.edu/pathpweb/physician_assistants.htm

Grading Policy

- 2 course examinations and a final CUMULATIVE exam
- Each exam - approximately 65 questions
 - 65-75% of the questions from the Textbook
 - 25-35% from the Lectures and Case Studies.
- Overall examination grade of 65% is required to pass the course
- Weighting
 - Exams 1 and 2 – 30% each.
 - Final – 40%.
- The final average will be rounded up to the next integer (i.e. 64.1 avg. = 65)

• 90 - 100	A	70 - 74	C
• 85 - 89	B+	65 - 69	D
• 80 - 84	B	0 - 64	F
• 75 - 79	C+		

Contact Information:

- Ms. Mundie – mundienj@umdnj.edu 732 235-4033
- Dr. Trelstad – trelstad@umdnj.edu 732 235-9525
- Dr. Martin – martineu@umdnj.edu 732 235-8114
- In the event of a weather-related issue contact:
 - Jill Reichman's prompt (732) 235-4444

Radio Stations with Weather Related Information

- STATEWIDE:

- NEWS 12 NEW JERSEY (Cable News)
- NJ 101.5 FM
- WBUD-1260 AM

- NORTHERN NEW JERSEY:

- WCBS-880 AM
- WOR-710 AM

- WBUD-1260 AM
- WKXW-101.5 FM

- CENTRAL NEW JERSEY:

- WCTC-1450 AM
- WMGQ-98.3 FM

- WKXW-101.5 FM

- SOUTHERN NEW JERSEY:

- KYW-1060 AM (Code: 615)

- WBSS-97.3 FM